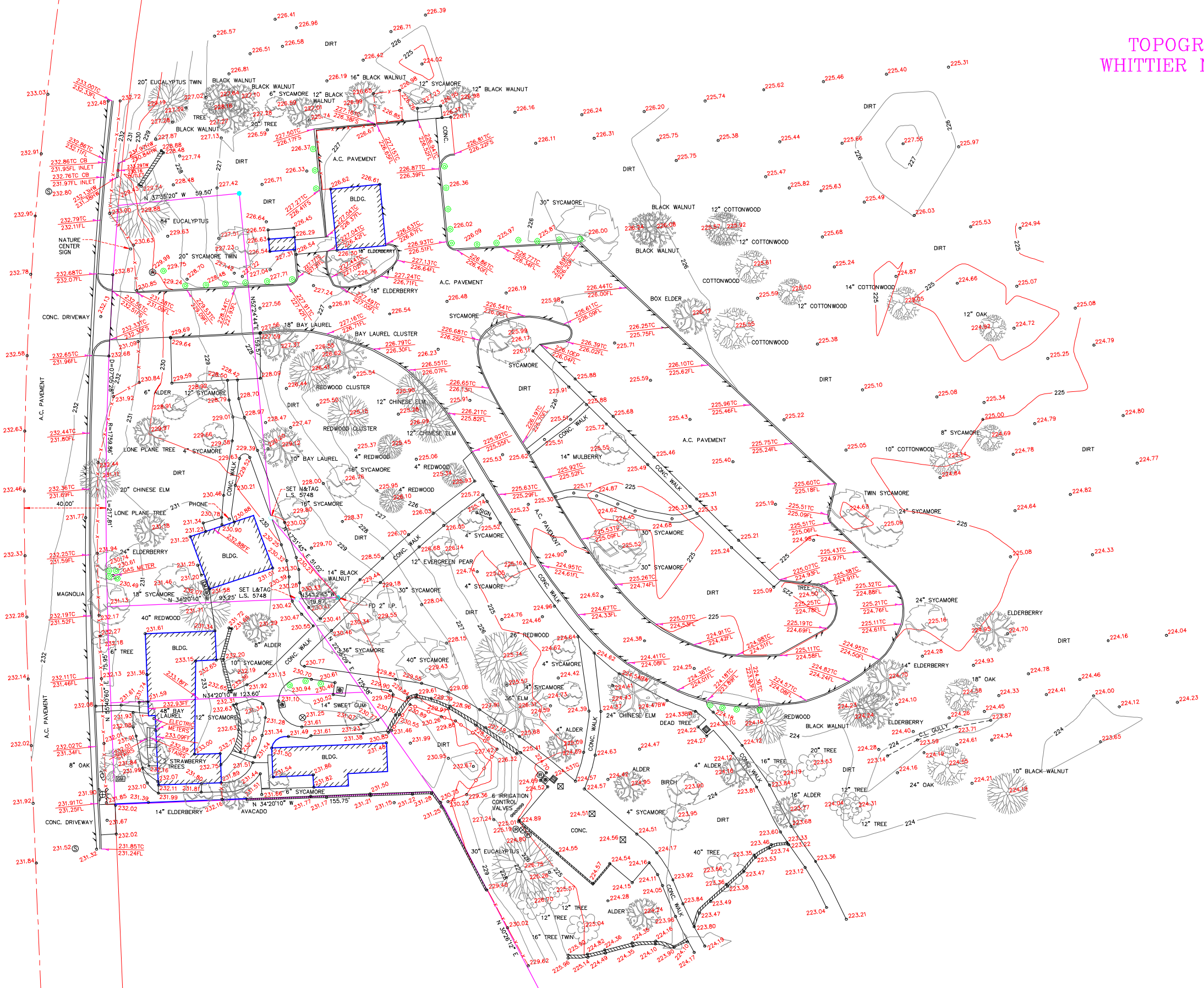


TOPOGRAPHIC SURVEY OF THE WHITTIER NARROWS NATURE CENTER

SCALE: 1" = 20' SEPTEMBER, 2001

FOR:
LOS ANGELES COUNTY DEPARTMENT OF PARKS AND RECREATION
UPPER SAN GABRIEL RIVER MUNICIPAL WATER DISTRICT

BY: _____



- LEGEND:**
- A.C. ASPHALT CONCRETE
 - BW BACK OF WALK
 - CB CATCH BASIN
 - CONC. CONCRETE
 - E EAST
 - FF FINISHED FLOOR
 - FL FLOWLINE
 - FS FINISHED SURFACE
 - HW HEAD WALL
 - N NORTH
 - S SOUTH
 - TC TOP OF CURB
 - TG TOP OF GRATE
 - TW TOP OF WALL
 - W WEST
-
- BUILDING LINE
 - - - CENTERLINE
 - ⊗ COLUMN
 - ⊗ CRASHPOST
 - ⊗ DRAIN GRATE
 - ⊗ DRINKING FOUNTAIN
 - ⊗ EDGE OF PAVEMENT
 - ⊗ ELECTRIC METER
 - ⊗ FENCE, CHAIN-LINK
 - ⊗ FENCE, WOOD
 - ⊗ FIRE HYDRANT
 - ⊗ GAS METER
 - ⊗ IRRIGATION CONTROL VALVE
 - ⊗ POWER POLE
 - ⊗ PROPERTY LINE
 - ⊗ SEWER MANHOLE
 - ⊗ SPOT ELEVATIONS
 - ⊗ WALL
 - ⊗ WATER METER
 - ⊗ WATER RISER

NOTE: THIS SURVEY DOES NOT INCLUDE EASEMENTS OF RECORD OR OTHERWISE, UNDERGROUND PUBLIC UTILITIES, OR OTHER SUBSTRUCTURES, OR ZONE EASEMENTS, SETBACK OR STREET WIDENING DATA IF APPLICABLE.