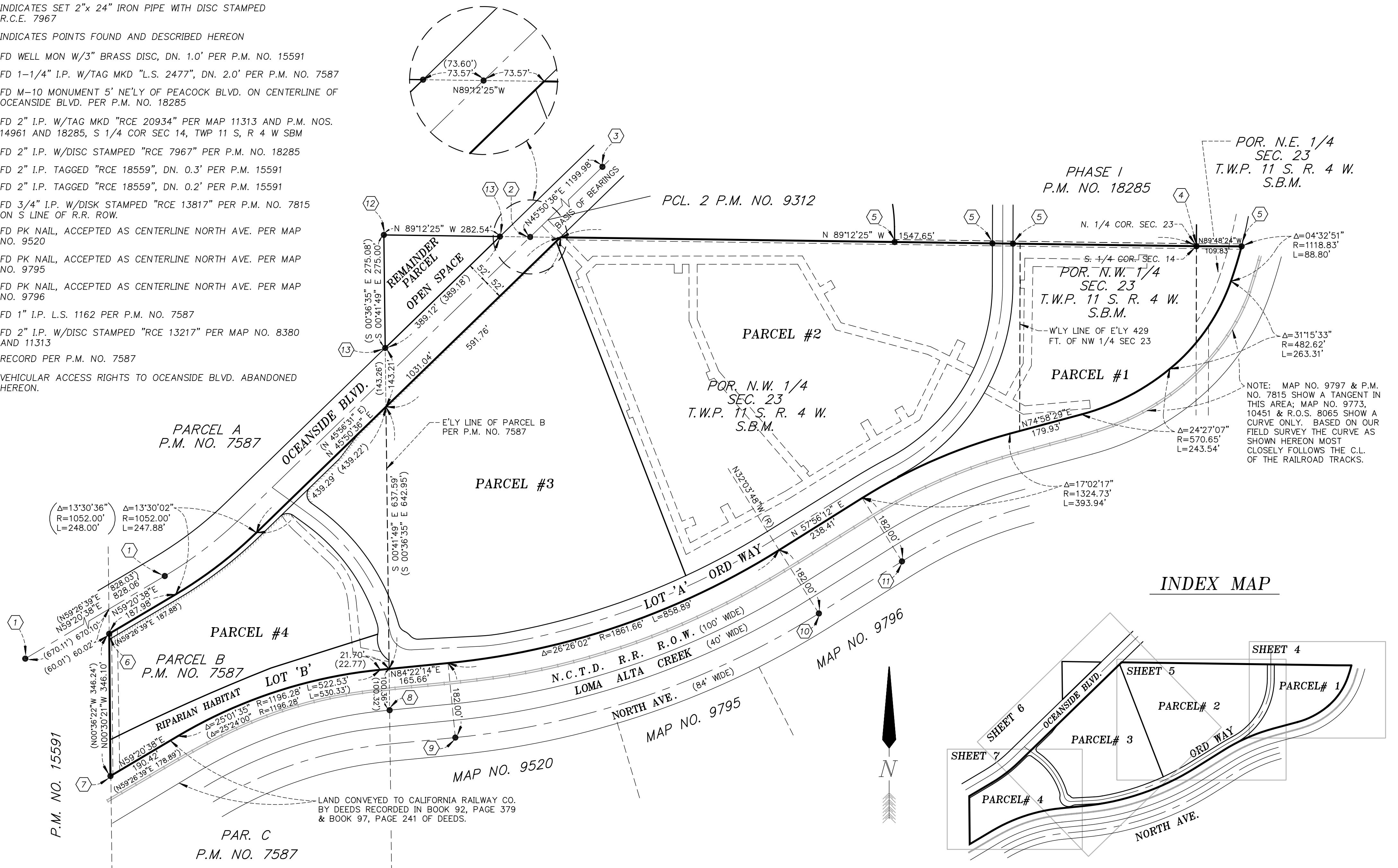


LEGEND

- INDICATES SET 1/2"x 18" STEEL PIN WITH PLASTIC CAP STAMPED R.C.E. 7967" UNLESS OTHERWISE NOTED HEREON
- ⊙ INDICATES SET 2"x 24" IRON PIPE WITH DISC STAMPED R.C.E. 7967
- INDICATES POINTS FOUND AND DESCRIBED HEREON
- ① FD WELL MON W/3" BRASS DISC, DN. 1.0' PER P.M. NO. 15591
- ② FD 1-1/4" I.P. W/TAG MKD "L.S. 2477", DN. 2.0' PER P.M. NO. 7587
- ③ FD M-10 MONUMENT 5' NE'LY OF PEACOCK BLVD. ON CENTERLINE OF OCEANSIDE BLVD. PER P.M. NO. 18285
- ④ FD 2" I.P. W/TAG MKD "RCE 20934" PER MAP 11313 AND P.M. NOS. 14961 AND 18285, S 1/4 COR SEC 14, TWP 11 S, R 4 W SBM
- ⑤ FD 2" I.P. W/DISC STAMPED "RCE 7967" PER P.M. NO. 18285
- ⑥ FD 2" I.P. TAGGED "RCE 18559", DN. 0.3' PER P.M. 15591
- ⑦ FD 2" I.P. TAGGED "RCE 18559", DN. 0.2' PER P.M. 15591
- ⑧ FD 3/4" I.P. W/DISK STAMPED "RCE 13817" PER P.M. NO. 7815 ON S LINE OF R.R. ROW.
- ⑨ FD PK NAIL, ACCEPTED AS CENTERLINE NORTH AVE. PER MAP NO. 9520
- ⑩ FD PK NAIL, ACCEPTED AS CENTERLINE NORTH AVE. PER MAP NO. 9795
- ⑪ FD PK NAIL, ACCEPTED AS CENTERLINE NORTH AVE. PER MAP NO. 9796
- ⑫ FD 1" I.P. L.S. 1162 PER P.M. NO. 7587
- ⑬ FD 2" I.P. W/DISC STAMPED "RCE 13217" PER MAP NO. 8380 AND 11313
- ( ) RECORD PER P.M. NO. 7587
- ▬▬▬ VEHICULAR ACCESS RIGHTS TO OCEANSIDE BLVD. ABANDONED HEREON.

PROCEDURE OF SURVEY



INDEX MAP

